



ENDURO CLUB PUCHOV

Strezenicka cesta 1025
020 01 PUCHOV

www.ecpu.sk
viliamv@mac.com

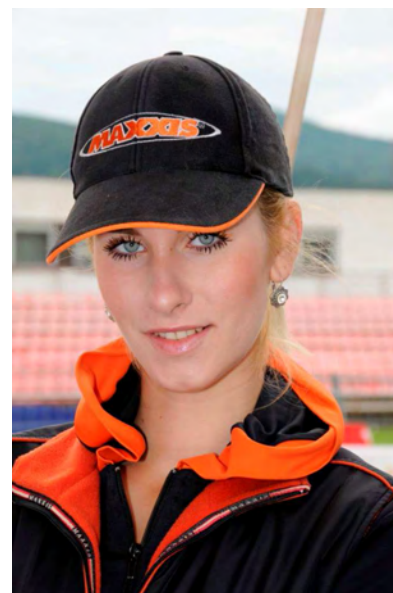


SMF: Slovenska Motocyklova Federacia

Sportocov 340
01701 POVAZSKA BYSTRICA

Tel: + 421 42 42 60 331
Fax: +421 42 42 60 332

smf@smf.sk
www.smf.sk



Access

→ **Airport:** Bratislava (160 kms)
Vienna (220 kms)
Zilina (45 kms)

Motorway: Highway D1 and exit PUCHOV

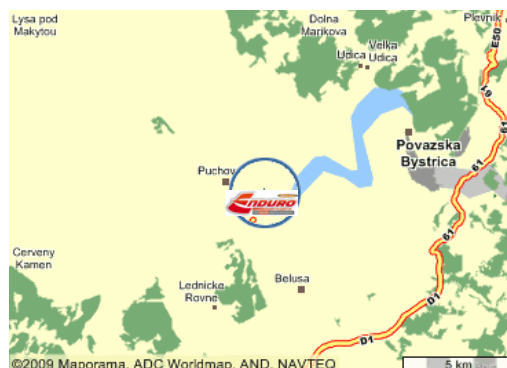
Accommodation

Hotel WILI

www.hotelwili.sk
Tel: +421 42 463 1451
manager@hotelwili.sk

Ubytovňa SISI

Tel: +421 90 367 1732
recepia@ubytovnasisi.sk
www.ubytovnasisi.sk



GP SLOVAKIA PUCHOV

JUNE
19/20



TRACK

Length: 65 km
Laps: 3
Cross Test : 1
Enduro Test: 1
X'Treme: 1
TC: 2 with service

Paddock : Stadium Puchov



Jury president:
SCHMIDT Heinrich

FIM Delegate:
ENEROTH Patricia

Technical member:
FERRETTI Gianfranco
JOHANSSON R

Race Director:
VETESKA Viliam

